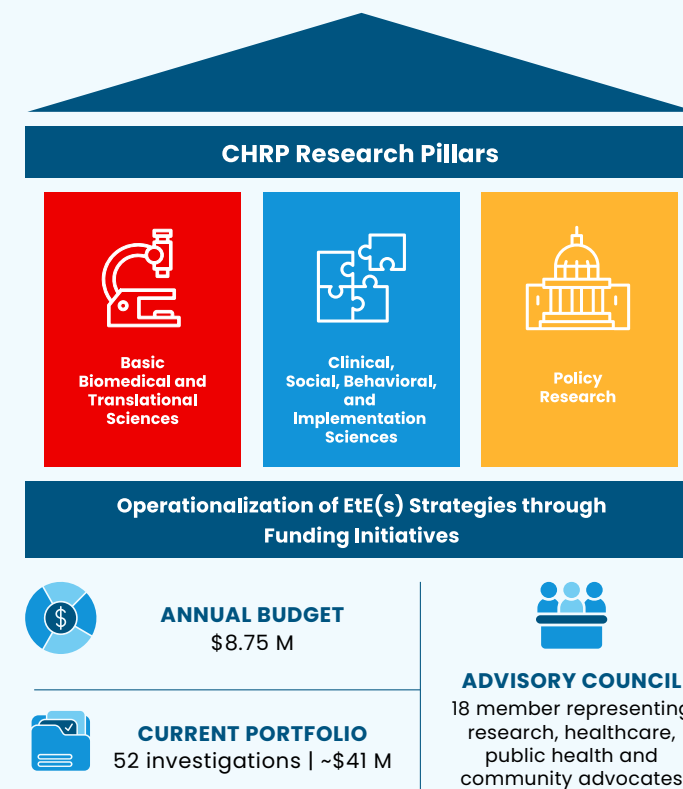


# PROGRAM PRIORITIES AND IMPACTS

Transforming Lives Through Science, Community, and Policy

Our mission is to advance transformative research across California that will promote the health of people living with or at risk for HIV.



We will achieve this mission through the following strategic priorities:

#### Program-Wide Priorities:

- Advance research to prevent, treat, and cure HIV
- Support syndemic-focused HIV research
- Support the next generation of investigators and community leaders
- Ensure evidence-based outcomes are accessible to all Californians

#### Basic Biomedical and Translational Sciences Priorities:

- Advance HIV-related basic biomedical and translational research
- Support discovery of basic mechanisms and processes of HIV

#### Clinical, Social, Behavioral, and Implementation Sciences Priorities:

- Advance research that supports access to, and uptake of, clinical and social services
- Focus on evidence-based research
- Support strategies to advance clinical care and programmatic efficiency

#### Policy Research Priorities:

- Advance policy research that addresses all HIV-impacted communities
- Prioritize cross-industry partnerships

TOTAL INVESTED | \$358M



## STATEWIDE HIGHLIGHTS

"CHRP helps us to achieve the objectives of our [ENDING THE EPIDEMICS STRATEGIC PLAN](#) by... addressing research questions that help us create higher- impact interventions for HIV prevention, treatment, and policy through a social determinants of health lens... and training the next generation of the public health workforce"

-DR. MARISA RAMOS  
OFFICE OF AIDS CHIEF CALIFORNIA  
DEPARTMENT OF PUBLIC HEALTH



INVESTIGATIONS  
1813

- Basic Bio 1067
- Social Beh 719
- Policy 27



INVESTMENT  
\$358M

- UC \$257M
- Non-UC acadmic \$32M
- Non-profit/NGO \$59M
- Government \$9M

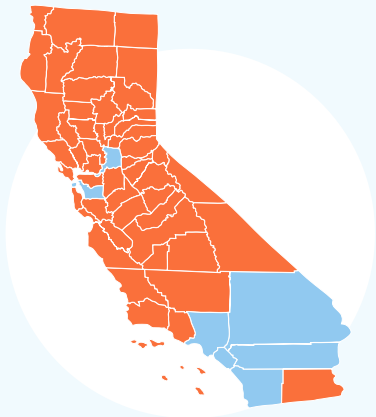
TO LEARN MORE, PLEASE VISIT: [WWW.CALIFORNIAAIDSRESEARCH.ORG](http://WWW.CALIFORNIAAIDSRESEARCH.ORG)



REGIONAL HIGHLIGHT: ENDING THE EPIDEMIC COUNTIES

“My first substantial grant as an early stage investigator was from CHRP. That first grant focused on how people’s relationships with other people affected how they used HIV health care. While we now take for granted that relationships with family, friends, and community are critically important to vulnerable people’s health, back in the early 1990s, this was still a relatively new idea.”

-PI, CLINICAL, SOCIAL, BEHAVIORAL, AND IMPLEMENTATION SCIENCE INVESTIGATION



INVESTIGATIONS  
1129

- Basic Bio 641
- Social Beh 461
- Policy 27



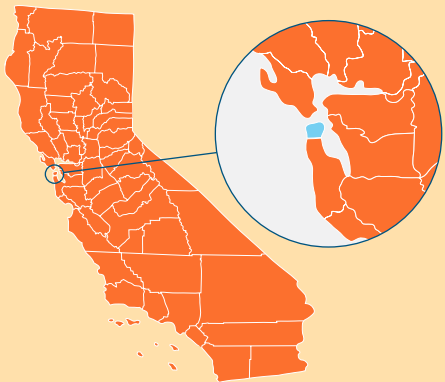
INVESTMENT  
\$291M

- UC \$80M
- Non-UC academic \$27M
- Non-profit/NGO \$53M
- Government \$9M

REGIONAL HIGHLIGHT: SAN FRANCISCO

“The Policy research [award] helped us expand the health insurance premium payment program, expand access to PrEP, and led to the creation of the Ending the Epidemics Coalition... leading to more coordination and collaboration and helping to break down silos [across sectors].”

-CO-PI, NORTHERN CALIFORNIA POLICY RESEARCH CENTER



INVESTIGATIONS  
410

- Basic Bio 215
- Social Beh 186
- Policy 9



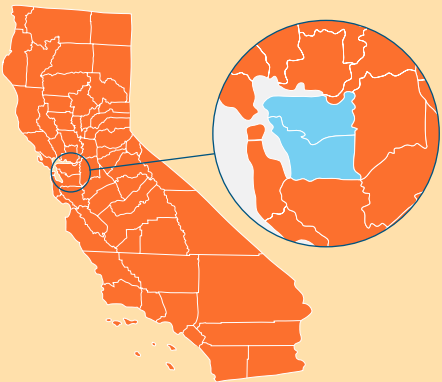
INVESTMENT  
\$99M

- UCSF \$80M
- Non-UC academic \$1M
- Non-profit/NGO \$14M
- Government \$3M

REGIONAL HIGHLIGHT: EAST BAY

“Our CHRP-funded work brought PrEP into the HIV and sexual health conversation in Oakland and the East Bay and brought Oakland into the larger California conversation about HIV prevention strategies.”

-PI, CLINICAL, SOCIAL, BEHAVIORAL, AND IMPLEMENTATION SCIENCE INVESTIGATION



INVESTIGATIONS  
76

- Basic Bio 37
- Social Beh 39
- Policy 0



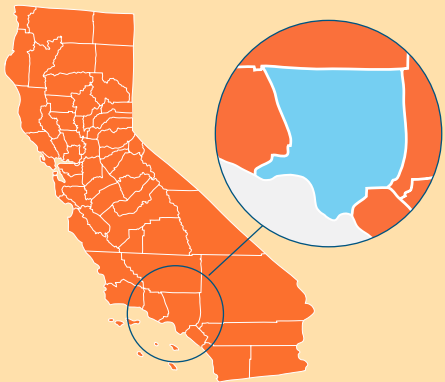
INVESTMENT  
\$17M

- UC Berkeley \$4M
- Non-UC academic \$648k
- Non-profit/NGO \$11M
- Government \$1M

REGIONAL HIGHLIGHT: LOS ANGELES

“With the CHRP funding we developed the HIV Medical Care Coordination program, that we later expanded to 31 HIV clinics in LA County. It was shown to be effective at improving viral load and retention in care for at risk patients, and continues to be sustained today. LA County invests over \$9 million annually for this program.”

-PI, CLINICAL, SOCIAL, BEHAVIORAL, AND IMPLEMENTATION SCIENCE INVESTIGATION



INVESTIGATIONS  
380

- Basic Bio 192
- Social Beh 171
- Policy 17



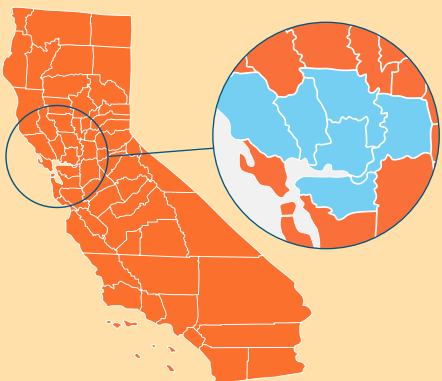
INVESTMENT  
\$102M

- UCLA \$60M
- Non-UC academic \$18M
- Non-profit/NGO \$19M
- Government \$4M

REGIONAL HIGHLIGHT: NORTH BAY AND SACRAMENTO VALLEY

“CHRP provided crucial early support for our HIV cure research when NIH was not coming through—which led over the course of ten years to eventual federal funding for a thriving research group, two clinical trials, and formation of a California-based biotechnology company.”

-PI, BASIC BIOMEDICAL AND TRANSLATIONAL SCIENCES



INVESTIGATIONS  
79

- Basic Bio 61
- Social Beh 18
- Policy 0



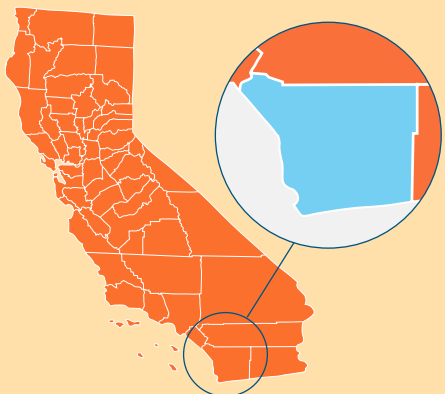
INVESTMENT  
\$11M

- UC Davis \$9M
- Non-UC academic \$126k
- Non-profit/NGO \$1M
- Government \$431k

REGIONAL HIGHLIGHT: SAN DIEGO

“Our CHRP-funded work in initiating PrEP into San Diego was instrumental in seeding PrEP uptake in the community and contributed to declining HIV rates.”

-PI, CLINICAL, SOCIAL, BEHAVIORAL, AND IMPLEMENTATION SCIENCE INVESTIGATION



INVESTIGATIONS  
254

- Basic Bio 194
- Social Beh 59
- Policy 1



INVESTMENT  
\$71M

- UCSD \$56M
- Non-UC academic \$7M
- Non-profit/NGO \$8M
- Government \$327k